



HORIZONTAL BALER TYPE AVOS 1410 B5

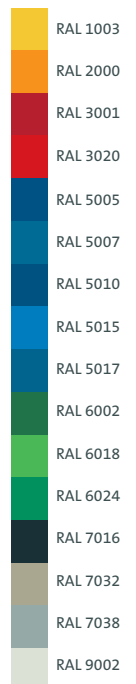
Flexible solutions for high demands



Standard
RAL-colours

■ AVOS 1410 B5-37/70

TIP:
Watch the
video!



Further RAL-colours on
demand at extra charge.

Go for flexibility

You will get your horizontal
baler type AVOS 1410 B5 optionally...

- ... with touch-screen display
- ... with feeding conveyor to fill the baler evenly and continuously
- ... with AVERMANN special press ram for pressing bulky materials
- ... with press ram guiding either on plastic rails or steel rollers
- ... with cross-binding

Your advantages:

- ✓ Inherently stable bales thanks to vertical 5-fold binding
- ✓ Low default risk due to two separate drive units
- ✓ Well-proven technology thanks to more than 30 years of experience

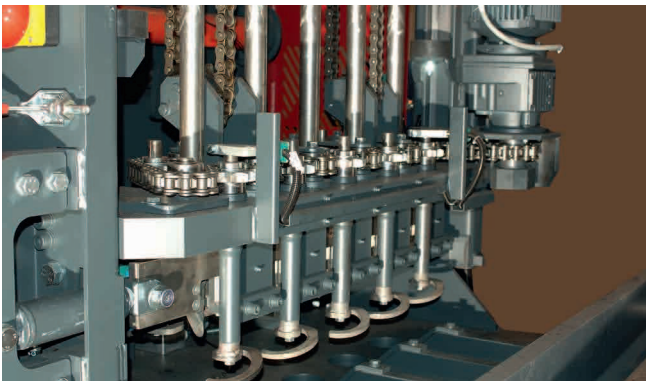
AVERMANN Maschinenfabrik GmbH & Co. KG

Lengericher Landstr. 35 ▪ 49078 Osnabrück ▪ Germany
Tel.: +49 5405 505-0 ▪ Fax: +49 5405 6441 ▪ info@avermann.de

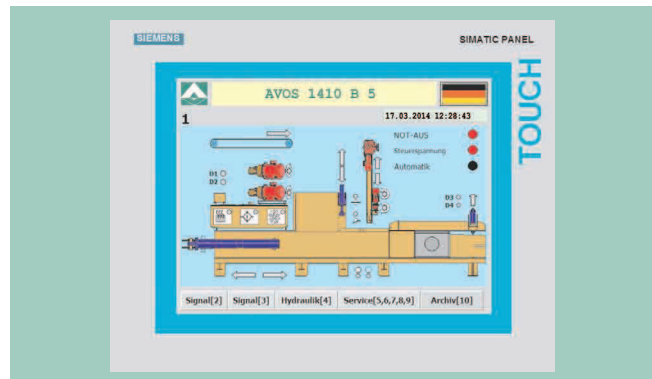




Automated vertical 5-fold binding



Touch-screen display



Flexible and tailor-made

Optimum compaction of expansive goods and saleable recyclable materials: This baler is outstanding due to its various options. The press ram guiding is done either on plastic rails or steel rollers. In addition the drive of this baler can be effected via one or two energy saving, powerful hydraulic pumps. Depending on application and requirement this machine

can be used flexibly. On the one hand, a power-saving mode is guaranteed by using only one pump and on the other hand a high throughput can be reached by activating the second pump. The 5-fold binding system guarantees inherently stable bales – even with bulky materials.

Technical data

	AVOS 1410 B5-37/70	AVOS 1410 B5-45/80	AVOS 1410 B5-60/80	AVOS 1410 B5-90/100
Machine length	10160 mm	10160 mm	10160 mm	10160 mm
Machine width	2400 mm	2400 mm	2400 mm	2400 mm
Machine height	3900 mm	3900 mm	3900 mm	3900 mm
Feeding hopper cross section	1400 x 1000 mm	1400 x 1000 mm	1400 x 1000 mm	1400 x 1000 mm
Dead weight approx.	23000 kg	24000 kg	25500 kg	26000 kg
Bale size (W x H)	1100 x 750 mm	1100 x 750 mm	1100 x 750 mm	1100 x 750 mm
Bale weight* up to	550 kg	650 kg	650 kg	700 kg
Channel adjustment	3-sided automatically	3-sided automatically	3-sided automatically	3-sided automatically
Cycle time (empty)	16.7 sec	16.7 sec	8.4 sec	10.3 sec
Idle speed capacity (theoretical)	226 m ³ /h	226 m ³ /h	452 m ³ /h	368 m ³ /h
Throughput** 35 kg/m ³ (cardboard)	6.5 t/h	7.0 t/h	9.4 t/h	9.4 t/h
Throughput** 60 kg/m ³ (cardboard, paper)	8.1 t/h	8.5 t/h	13.2 t/h	16.2 t/h
Throughput** 100 kg/m ³ (newspapers)	15.5 t/h	16.0 t/h	22.0 t/h	24.0 t/h
Specific press force	84.8 N/cm ²	97.0 N/cm ²	97.0 N/cm ²	121.2 N/cm ²
Press force	700 kN	800 kN	800 kN	1000 kN
Drive capacity	37 kW	45 kW	2 x 30 kW	2 x 45 kW

* depending on bale length and material, ** relating to apparent weight

Valid for all machine types

Adjustable bale length; Binding: 5-fold vertically; optional with cross-binding: 5-fold vertically, 3-fold horizontally; Electricity: 3 x 400 V, N, PE/50 Hz